

La-Z-Boy Healthcare Rapid Response Program

(In-Stock Recliner Ships in 24 hours)

EV MOBILE MEDICAL RECLINERS

DURABLE® HD 650 SERIES

EV Mobile Healthcare Chaise Recliner

Durable® HD 650 Series

Infinite Position Locking Back

Width: 32.5"

Depth: 35.5"

Height: 47"

Back Height: 25"

Reclined Depth: 76"

Seat Width: 24"

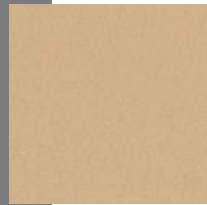
Seat Depth: 21"

Seat Height: 21.5"

Arm Height: 27"

Weight Capacity: 650 lbs

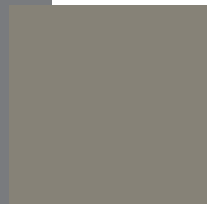
CURRENTLY OFFERED IN



Fabric: Mayer Durango

Color: Natural

Grade: 5



Arm Caps: Urethane

Color: 802 Slate



IN STOCK MODEL

EC4117UQ-FBH-QR

Slate Urethane Arm Caps

4" Central Lock + Steer

Foley Bag Holder

Quick Release Bracket

OPTIONAL FEATURES*

Folding Side Tray Table

IV Pole + Bracket

**Must be ordered separately.*

To order, please contact customerservice@getknu.com with the following information:

- EC4117UQ-FBH-QR
- Fabric: Mayer Durango Natural
- Arm Caps: 802 Slate
- Please reference 'Rapid Response Program' on the order.